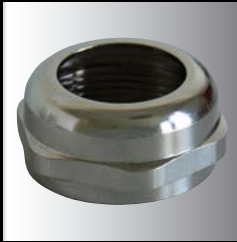


Cable glands Brass nickel-plated



Cable glands brass nickel-plated, fully mounted, IP68, metric or PG, assembled with washer and lock nut

Material: brass nickel-plated, (halogen free, lock nut/washer: TPR), temperature range: - 40°C to + 85°C, protection category: IP68. Properties: integrated strain relief, fully mounted, RoHS-compliant.

HAUPA cable glands do protect electric equipment (switchboards, distribution boxes) against mechanical influences, dust, and humidity by connecting a cable tight and sealed to the housing.

HAUPA offers next to metric as well PG cable glands.

For an EMC-compatible installation, brass cable glands inclusive EMC insets should be used (back page).

HAUPA cable glands are IP68 (dust and humidity) to protect human against the potential risk during usage.

Metric

Art. No.	Description	Range	⌀
250600	Brass nickel-plated M12	3-8,5	14
250602	Brass nickel-plated M16	4-8	18
250604	Brass nickel-plated M20	6-12	22
250606	Brass nickel-plated M25	10-14	24/27
250608	Brass nickel-plated M32	15-22	35
250610	Brass nickel-plated M40	18-25	40/45
250611	Brass nickel-plated M40	22-30	45
250612	Brass nickel-plated M50	32-38	55/57
250614	Brass nickel-plated M63	37-44	64/68

PG

Art. No.	Description	Range	⌀
250630	Brass nickel-plated PG7	3-6,5	14
250632	Brass nickel-plated PG9	4-8	17
250634	Brass nickel-plated PG11	5-10	20/21
250636	Brass nickel-plated PG13,5	6-12	23/22
250638	Brass nickel-plated PG16	10-14	25/24
250640	Brass nickel-plated PG21	13-18	30
250642	Brass nickel-plated PG29	18-25	40
250644	Brass nickel-plated PG36	25-33	50
250646	Brass nickel-plated PG42	32-38	57
250648	Brass nickel-plated PG48	37-44	64



EMC-Cable glands Brass nickel-plated

EMC-Cable glands brass nickel-plated, fully mounted, IP68, metric or PG, assembled with washer and lock nut



Material: brass nickel-plated, (halogen free, lock nut/washer: TPR), temperature range: - 40°C to + 85°C, protection category: IP68.
Properties: integrated strain relief, fully mounted, RoHS-compliant.

HAUPA cable glands do protect electric equipment (switchboards, distribution boxes) against mechanical influences, dust, and humidity by connecting a cable tight and sealed to the housing.

For an EMC-compatible installation, brass cable glands inclusive EMC insets should be used.

HAUPA cable glands are IP68 (dust and humidity) to protect human against the potential risk during usage.



Metric/EMC

Art. No.	Description	Range	
250650	Brass nickel-plated EMC M12	3-8,5	14
250652	Brass nickel-plated EMC M16	4-8	18
250654	Brass nickel-plated EMC M20	6-12	22
250656	Brass nickel-plated EMC M25	10-14	24/27
250658	Brass nickel-plated EMC M32	15-22	35
250660	Brass nickel-plated EMC M40	18-25	40/45
250661	Brass nickel-plated EMC M40	22-30	45
250662	Brass nickel-plated EMC M50	32-38	55/57
250664	Brass nickel-plated EMC M63	37-44	64/68

PG/EMC

Art. No.	Description	Range	
250666	Brass nickel-plated EMC PG7	3-6,5	14
250668	Brass nickel-plated EMC PG9	4-8	17
250670	Brass nickel-plated EMC PG11	5-10	20/21
250672	Brass nickel-plated EMC PG13,5	6-12	23/22
250674	Brass nickel-plated EMC PG16	10-14	25/24
250676	Brass nickel-plated EMC PG21	13-18	30
250678	Brass nickel-plated EMC PG29	18-25	40
250680	Brass nickel-plated EMC PG36	25-33	50
250682	Brass nickel-plated EMC PG42	32-38	57
250684	Brass nickel-plated EMC PG48	37-44	64

